



Reflections

...then and now
Loveland Museum Center

Fall 2019

Lunch & Learn

Wednesday October 23; 11:30 to 2:00

"Tell the truth and let the world decide"
Jack Dominic – Voice of America

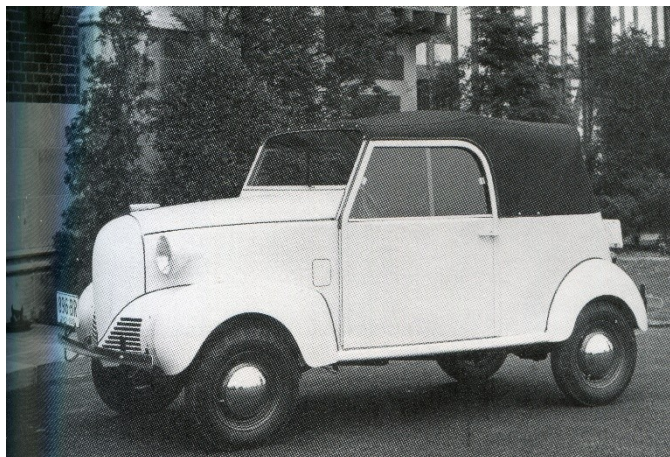
Jack Dominic, Executive Director of the National Voice of America Museum of Broadcasting will discuss the extraordinary programming and innovative technology developed by the VOA beginning in the early 1940's. Much of it right here in southwestern Ohio.

During WWII Hitler's speeches condemned "those Cincinnati liars", who were telling the truth to combat Hitler's propaganda. WLW radio became the Voice of America or the "nation's station."

Dominic will also share some stories about Powell and Lewis Crosley and the way they worked together as a team with inventions, innovative ideas with radio programming, owning the Red Baseball team and holding the first national baseball game under the lights.

Dominic, former broadcasting executive and adjunct professor at Northern Kentucky University and UC, is a popular speaker and storyteller.

Reservations are required by October 21st; Cost is \$10 for members, \$15 for non-members. You can send check and name(s) to LMC or use PayPal.



First 1939 Crosley coupes – Powell's dream to create a car for the masses, not the classes.

"Deck the Halls"

November 18 – 22

Remember how lovely Bonaventure has been over the years during the Holidays? Unfortunately, there is no magic wand to make this happen.

New board member, Kim Grethel, has agreed to help with this project this year, but we still need your help. We plan to purchase a new tree for the parlor, complete with lights, but it will still need the lovely Victorian ornaments we have stored away. And we

hope to spread the decorations throughout each room, so anyone interested, please call the museum for details about times.



Christmas in Loveland

Saturday, December 14th – 4:00 to 9:00

The Loveland Museum Center will again take part in the Little Miami Chamber of Commerce sponsored Christmas in Loveland, Saturday, December 14th. This annual event transforms the city into a "Wonderland" with lots of entertainment at the Fountain Green, carriage rides, carol singing, Loveland Stage Company performances and even a trolley to help participants move from one activity to another.

The Museum will again provide the mini train rides around the parking lot from 4:00 to 8:00, thanks to our sponsors, Accounting Plus and Tufts Schildmeyer Funeral Home. Also at the museum will be refreshments, music, all the decorated rooms, crafts in the cabin, a photo op with the decorated sled, and the Gift Shop filled with last minute gifts at reasonable prices.

Gift Shop News

The potter we have used for 20+ years has gone into semi-retirement. Since the pottery is "Loveland" and NOT a T-shirt, it has always been a very good seller at the gift shop. We needed a replacement.

Our Loveland pottery will now be made locally in Loveland's own Whistle Stop Clay Works. We are fortunate to have six local artists, each working on 4-5 pieces to sell in the gift shop. These artists are: Brett Dowdy, Martha McGowen, Teresa Sandoval, Karina DeFreitas, Nana Noelle, and Bonnie McNutt, owner of the Clay Works.

The pieces should be available by mid/late October in the gift shop. Be sure to stop in and see their new designs. A special thanks to Bonnie McNutt for coordinating!

Another new addition will be "old fashion" toys. The Museum Center booth at the Loveland Farmer's Market spiked an interest in some of the vintage toys that were part of the table display. The Jacob's Ladder was especially popular – for children and adults.

Don't forget the gift shop's many reasonably priced gifts, including Loveland memorabilia, cards, books by local authors, and a variety of seasonal items.

News from LMC.....



Museum Center's table at the Loveland Farmer's Market,

Shown here: Jan Beller, Ken Davis & Tami Funke

A big thanks to Ken Davis and Tami Funke for setting up and greeting friends three Tuesday afternoons this past summer. Only one was rained out after an hour. They had a "history quiz" for any children who wanted to earn a "market dollar." passed out flyers and newsletters and enjoyed talking to many local residents about the Museum Center.

More Summer Activities



The Loveland Museum Center participates in the Fourth of July Parade

Thanks to Mark Keitel for bringing his antique car and members, Tami Funke, Jim Grethel, Andy Bateman, Ken Davis, and Pete Bissman for marching.

Pressure Washing

All the Museum Center's buildings, including the gazebo, were power washed in August. A big improvement and a job well done by Cincinnati Premier Pressure Washing.



Christopher Smith on the roof pressure washing the second level of Bonaventure.

Clermont County Display

The Loveland Museum Center again put up a display in the Recorder's Office in Batavia. All the historical societies in Clermont County can take advantage of this outreach opportunity and our month was July.

Although we do not know how many people stop to look, we do hear positive comments from the staff, and it is one more way of "getting the word out!"

Care of the Herb Garden

The Audrey Gomes Martha Hussar Memorial Herb Garden was designed and planted soon after the museum opened in 1985. All the work was done by member volunteers who had a love and knowledge of herbs and other historic plants.

The group of volunteers maintained the garden throughout the year and used some of the herbs and plants, selling some at an annual bake/plant sale.

Over the years the group became smaller and smaller and completely disbanded in the late 1990's.

Today, we are fortunate to have Peggy Goodwin, an expert on plants (and other skills) work in the garden to try to keep it looking good.



Peggy Goodwin spends many early morning hours digging the weeds and unwanted plants that begin to take over the garden. Here she is in early September.

“This and That”

The Herbal Delights luncheon was a great success in August with about 50 guests and a delightful speaker. Luncheon, themed decorated tables, and raffle baskets, all donated by volunteers, provided \$1350 in funds for the museum.

Janey Kattleman gives a humorous talk about “this & that”.



Digital Timeline

The interactive timeline, introduced in May, has been a big hit with everyone.

The team of volunteers, headed by Sue Peterson, met the goal of completing the first phase in time for the school tours in May and they have been working all summer to begin adding links.

Thanks to Pete Bissman, who is adding the data he receives from various sources and we now have links to Nancy Ford Cones, many school pictures, a video from The Loveland Castle, and the Valentine Program.

We have also begun planning and implementing oral interviews with descendants of first Loveland settlers. The first interview was with Larry Rich and his distant cousin, Marvel Rich Ferguson, who celebrated her 100th birthday September 22nd (party held here on the 21st).



Marvel Rich Ferguson and Larry Rich being video tapped in the second parlor. She has some interesting stories tell about her early years in Loveland.

The plan is to video tape other interviews with descendants of early Loveland families and incorporate pieces in the story about Loveland families as another link in the timeline. Call Jan at the office if interested.



One of several Rich plots in Evergreen Cemetery

Strategic Planning

The strategic planning committee, Peggy Goodwin, Jim Grethel, Ken Davis, Kathryn Lorenz, Jenny Shives, and Jan Beller, plus several board members met with the AmeriCorps Volunteer, Donna Harris in September, to begin the process of writing and implementing a strategic plan. The key is to get active chairs of committees to devise a plan for the next five years with measurable goals and potential budget.

The key operating committees are:
Maintenance/facilities, Program/community engagement, Collections/exhibits/education, Finance/Administration. Each committee will submit a budget to the finance committee, so a realistic budget can be finalized each year.

This process will take a lot of diligent work and time before it is complete. Committees are starting to meet immediately and will be reaching out to interested volunteers during the next few months.

Annual Giving Campaign

October is time of giving – the museum annual giving campaign letters will be mailed by mid-October. Last years' giving was generous, and we look forward to even more participation and continued generosity as we work through the strategic planning process.

The maintenance committee has begun an assessment of our buildings and grounds, with the conclusion that there is some extensive maintenance and landscaping needs within the next year and beyond. Although volunteers can help with some landscaping, there will be expenses. Therefore, we will be using some of the annual giving funds to help with these ongoing projects.

The board appreciates any financial help you can provide.

NFC 150th Birthday Party



Sue Peterson cuts the cake at the September 11th Nancy Ford Cones 150th Birthday Party
And a toast was made to this local photographer

Unveiled at the birthday party was a collection of architectural copies of Cones work from 1926 on loan from the Mariemont Preservation Foundation. The Cones family spent a year living in Mariemont taking pictures of various scenes in the area to use for advertisement purposes in this planned community.



"Cones Doorway"
SW Corner of Elm & Oak Streets, Mariemont

Welcome new members

Kathy Bailey 608-5090
10043 Fox Chase Dr.
Loveland, OH 45140

Joan & Ken Bottom 346-0364
124 N. Wall St. 236-5818
Loveland, OH 4514

Patricia Dowd 509-4597
414 Park Ave.
Loveland, OH 45140

Keith & Mary Ann Falter 248-1162
346 Fieldcrest Ln.
Loveland, OH 45140

Sheila Wheatley 677-9650
1744 Falcon Ln 239-9536
Loveland, OH 45140

Cindy Wilmes 207-0888
2960 Maureen Court
Loveland, OH 45140

THE NEW LOOK



The New Loveland Museum sign, designed by Peter Sexton and installed by Klusty Sign Associates, was put in place in early September.

This picture was also used in the new brochure, also designed by Sexton, which will be mailed to all members with the annual giving letter.

Kudos to Volunteers....



All the help with Herbal Delights: Sue Peterson, Joyce Baron, Jenny Shives, Jane Disher, Jeannie Shumaker, Peggy French, Mildred Jones, Melissa Carrier, Judy Poe, Amy O'Keefe, Kim Grethel, Tami Funke, Kay Napier, Winkie Foster and all the girls from St. Columban who served food.

Technical support and picture taking by Pete Bissman.

All the volunteers who helped with the launching of the digital interactive timeline: Sue Peterson, Pete Bissman, Norman Neal, Jenny Shives, Peggy French

Peggy Goodwin for designing and layout of the new museum directory. Also thanks for her work in the herb garden – it hasn't looked this good in several years. She is also beginning to enter our collections into Past Prefect data base.

The new board members who have really pitched in and taken charge, especially our new President, Jim Grethel.

AmeriCorps volunteer Donna Harris for her expertise and time in leading our members through this strategic planning process.

Terrie Puckett from the Grail as she brings the Grail creche collection for our annual Christmas display.

Loveland Citizens' Leadership Academy

The Loveland Museum Center was host for the first of ten workshops by the City of Loveland when it launched the leadership academy. About 26 Loveland participants came to the session, in addition to speakers and other presenters.

President Jim Grethel welcomed the guests and gave a brief talk about the museum and the importance of preserving history of Loveland. The three-hour session was held in the History House, and many of the guests came to a 30-minute tour of the museum before the event started. LMC gave each participant a copy of *Passages Through Time*,



Ray Kingsbury welcomes the group and talks about restoring Loveland's front porch.

In Memoriam...

Bruce Laurence Brock

Life Member Bruce Brock (9-13-1930 – 8-29, 2019) died at his home in Loveland with his immediate family, just weeks before his 89th birthday.

Bruce was born in Loveland and moved to Norwood where he graduated from Norwood High School. He went to Miami University and served two years as a lieutenant in the Naval Supply Corps. Before retirement, he worked for the Loveland Mutual Building and Loan Company, later Hunter Savings. The Brocks retired to Naples, FL, but returned to their home in Loveland after Hurricane Irma.

Bruce is survived by his wife of 67 years, Mary Lee (who started and co-managed the museum gift shop until Nancy took over), a daughter Karen of Naples, three grandchildren, six great grandchildren, and his sister Shirley Scharfenberger. Preceded in death by his son, John and parents Laurence Brock and Alice Schroeder.

Did You Know?

The year 1920 was the time of “The Noble Experiment”, the name given to Prohibition began. Loveland residents played a minor role during the years leading up to the 18th Amendment with the forming of the Women’s Christian Temperance Union (WCTU), founded in Ohio in 1874.

The most active chapters were located in the Cincinnati area. The Loveland members were deeply involved in the cause, but to their credit they did not resort to the



physical, sometimes violent, demonstrations that became the trademark of some of the other chapters.

WCTU, circa 1912

(picture from *Passages through Time*)

As time passed the WCTU became an umbrella to shield the citizenry from “undesirable behavior and other unsuitable doings”, as well as the consumption of alcoholic beverages. In 1906 an ordinance was passed by the village of Loveland to regulate the sale of liquor.

During the 19th century, alcoholism, family violence and saloon based political corruption prompted prohibitions to end trade. It gained national grass roots support through the WCTO and coordinated by the Anti-Saloon



League.

Gear's Saloon, the night before Prohibition began

When the 18th amendment brought prohibition to the country in January of 1920, three Loveland saloons were forced to close – Frank Emerson's, George J. Gear's, and Malloy's.

To enforce prohibition in the area, a liquor court was established in the Town Hall, later moved to the basement of the Methodist Church. Since Loveland extended into three counties, the mayors heard complaints against alleged violator living in Hamilton, Clermont, and Warren counties. Fines resulting from prohibition arrests were used to help purchase Loveland first motorized fire engine in 1921.

The 18th amendment put a ban on production, importation, transportation and sale of alcoholic beverages. The Volstead Act set down rules, but each state could regulate also, such as the individual use in the home and wine for communion.

Medical Alcohol allowed druggists to fill doctor's prescriptions. One doctor filled 475 prescriptions in one day! Four hundred pharmacists and 1000 doctors were caught. Maximum fine was \$50.00; only 12 doctors and 13 pharmacists were indicted.



George J. Gear's Saloon on January 16, 1920, the night before Prohibition began. This saloon is now Paxton's Grill.

Prohibition lasted 14 years. It was a time characterized by speakeasies, glamor, and gangsters and a period in which even the average citizen broke the law. The stock market crash in 1929 also began to change people's opinion. People needed jobs. The government needed money. Making alcohol legal again would open jobs and provide sales tax dollars for the government.

The “Noble Experiment” officially ended on December 5, 1933 when the 21st amendment was ratified, the first and only time an amendment to the US Constitution was repealed.

The Loveland Museum Center will be hosting the Ohio Local History Alliance Region 8 meeting on March 7, 2020.

We will be hosting representatives of local historical societies from eight counties in southwest Ohio. Program will be planned by Museum Center's staff, and representatives from OLHA.

Loveland's Best Kept Secret



The JoAnn Richardson History House available for rent
Call 513-683-5692 for details

CORPORATE MEMBERS

Through monetary contributions or pledges of donated materials and/or services, these area businesses and organizations support the Loveland Museum Center.

+Accounting Plus+
Blooms & Berries
Bond Furniture & Mattress Galleries
City of Loveland
Cleveland Specialties Company
DLK FRAMES
Eads Fence & Loveland Hardware Co, Inc.
Edward Jones Company
John Hill Construction, LLC
Little Miami River Chamber Alliance
Loveland Castle
Loveland Dairy Whip
Loveland Farmer's Market
Loveland Sweets
Loveland Health Care Center
Loveland Regional Veterinary Hospital
Loveland Symmes Fire Department
Loveland Woman's Club
MillPrint LLC Inc.
Miller Heating & Cooling
Chapter A-PEO Loveland
Paxton's Grill
Phipps Auto Sales/General Store
Rick Ogden Heating & Air Conditioning
Don Shrout Insurance Agency LLC
Tano Bistro & Catering
Thompson & Associates
Tufts-Schilmeyer Funeral Home
Whistle Stop Clay Works
The Works

Thanks for your support!!

Memorabilia For Sale

The Museum Center continues to sell the Historic Site Coverlet in both green and cranberry (\$48.00) and the 25th Anniversary Cookbook (\$10.00). Also books by local authors, including Paul Pfarr, Hazel Cole Kendle, Lester Horwitz, and Larry Hamilton, John Vial and County Historical Books. **The Museum Gift Shop also** has Loveland Memorabilia, T-shirts and sweat shirts, the numbered hand painted Bonaventure ornament, Loveland pottery, Nancy Ford Cones cards & prints and more!

"Passages Through Time"



Published by Greater Loveland Historical Society, this fascinating book is brimming with period photographs and historical information. Copies are available in the Museum Gift Shop for \$15.00 each. All proceeds benefit ongoing programs & preservation.

We'll be happy to mail a copy anywhere in the U.S. for an additional charge - \$5. Please send check along with mail instructions to Loveland Museum Center, 201 N Riverside Ave.; Loveland, OH 45140

BOARD OF TRUSTEES

President	Jim Grethel
Vice President	Ken Davis
Treasurer	Nancy Morgan
Recording Secretary	Amy O'Keefe
Corresponding Secretary	Kathryn Lorenz

Members at Large:

Andy Bateman	Rob Bauer
Pat Benton	Pete Bissman
Kim Grethel	Norman Neal
Sue Peterson	Jenny Shives

Gift Shop Managers: Nancy Garfinkel & Nancy Morgan
Volunteer Library/Collections Staff: Jo Funke, Laura Pettigrew, Jenny Shives, Tami Funke, Linda & Harold Eberenz, Peggy Goodwin, Tracy Anastasia
Docent Coordinator, Pat Benton
School Tours: Peggy French, Tami Funke

Museum Staff

Director	Janet Beller
----------	--------------